

~ ~ ~ For Immediate Release ~ ~ ~

## **ALBACORE RESEARCH LTD INTRODUCES EXPANDER – NOT ONLY FOR SHIP DESIGN AND CONSTRUCTION**

May XX, 2003 - Albacore Research Ltd (ARL) today announced that its new Expander software program for naval architects and shipbuilders will be released in June 2003.

Expander is a Rhinoceros 3.0 plug-in module that converts 3D surfaces to 2D shapes for production. It works with developable surfaces that do not require stretching and with compound curvature surfaces which must be stretched within maximum allowable strain limits for a given material and forming process.

The Expander routine is intuitive and easy to use, even for an inexperienced user. Small surfaces that can be produced in a single piece can be directly expanded, while larger surfaces are divided into individual patches. The user selects the surface patch and designates the desired expansion parameters, and the expanded shape is automatically displayed next to the 3D surface on the screen.

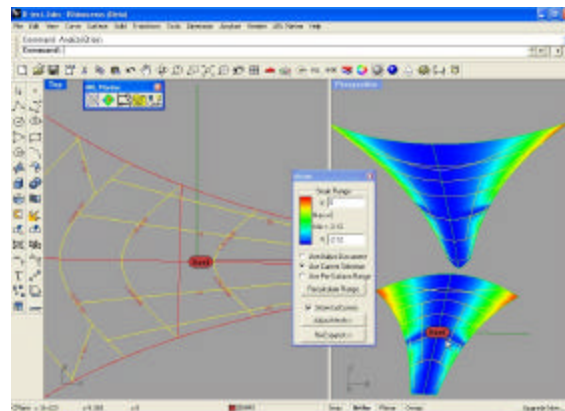
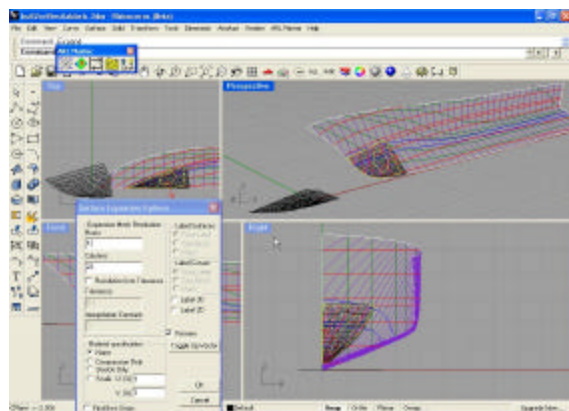
To aid production, Expander has functionality to map curves from the original 3D surface to the expanded 2D surface, and to transfer markings back from the 2D shape to the 3D surface. It also provides for text labeling of marking lines on the 3D surface and its 2D expanded counterpart. NC cutting equipment can mark these text labels automatically onto the cut material for ease of identification. All expanded shapes can be exported with markings to the DXF file format, which is the basis for most nesting and NC cutting programs.

(MORE)

ARL president Rolf G. Oetter said, "Expander has been developed from plate expansion routines in ARL's ShipConstructor ship hull production software, which has been used to expand more than 50,000 ship plates over the last 12 years worldwide."

Oetter added: "The Expander program has applications beyond the ship construction industry. It can be used for shoemaking, fashion design and any industry which needs to expand complex-curvature trimmed surfaces."

Based in Victoria, BC, Canada, ARL is a software development company specializing in CAD/CAM modeling software for the shipbuilding industry. The company was founded in 1990. ARL's ShipConstructor software has been used to design thousands of ships worldwide.



Albacore Research Ltd's Expander Software

(END)

Contact details:

Rolf G. Oetter

ARL Albacore Research Ltd

304-3960 Quadra St.

Victoria, BC, Canada V8X 4A3

1-888-210-7420

1-250-479-0868